



The NIO200 Product Line

A Novel, Affordable ISA100 Wireless Connectivity Solution

Nexcom



1
NEXCOM H.Q.
Taipei, Taiwan



2
NEXCOM
Central Taiwan Office
Taichung



3
NEXCOM UK
Milton Keynes



4
NEXCOM Italy
Milan



5
NEXCOM USA
Fremont, CA



6
NEXCOM China
Beijing



7
NEXCOM China
Shanghai



8
NEXCOM United System
Service Shanghai









9
NEXCOM Surveillance
Technology Shenzhen



10
NEXCOM Japan
Tokyo



Nexcom

IAS	IDS	MCS	IoT	ISP	NCS
					
IoT Automation Solutions	Intelligent Digital Security	Mobile Computing Solutions	Internet of Things	Interactive Signage Platform	Network & Communication Solutions
<ul style="list-style-type: none"> ■ iAutomation ■ Industrial Wireless and Firewall Solutions ■ Intelligent System Services 	<ul style="list-style-type: none"> ■ IP Camera ■ NVR 	<ul style="list-style-type: none"> ■ Telematics Computers for Car, Heavy Duty Vehicle & Train 	<ul style="list-style-type: none"> ■ Solutions for Vertical IoT Applications ■ Solutions of Healthcare & Medical Informatics 	<ul style="list-style-type: none"> ■ Digital Signage ■ Interactive Kiosk 	<ul style="list-style-type: none"> ■ Network Security ■ Storage ■ Switch ■ SDN & NFV ■ Industrial Security



NIO200 Product Line Overview

- ◆ **Family of ISA100 Wireless compliant infrastructure products augmented with state-of-the-art EZ Mesh Wi-Fi backbone technology**
- ◆ **Comprehensive solution that provides**
 - Scalable system and security management of ISA100 Wireless compliant field instruments
 - Robust connectivity to applications residing on the plant network
 - Cost effective, wide geographic coverage via EZ Mesh Wi-Fi backbone connectivity



The NIO200 Product Family



NIO200IAG – All-in1-Gateway

- ISA100 Wireless compliant System/Security Manager, Gateway and Backbone Router
- Manages an ISA100 Wireless subnet composed of field instruments arranged in a multi-hop wireless mesh configuration
- EZ Mesh Wi-Fi Backbone infrastructure connectivity to the control room + perfect triple play infrastructure video surveillance



NIO200IDG – Distributed Gateway

- ISA100 Wireless compliant System/Security Manager, Gateway and Backbone Router
- Manages multiple ISA100 Wireless subnets federated by NIO200IWR Backbone Routers
- Allows for distributed network topologies that maximize geographic
- EZ Mesh Wi-Fi Backbone infrastructure connectivity + perfect triple play infrastructure video surveillance



NIO200IWR – Backbone Router

- ISA100 Wireless compliant, cost-effective Backbone Router
- Provides wireless and wired backbone connectivity to ISA100 Wireless compliant field instruments
- EZ Mesh Wi-Fi Backbone infrastructure connectivity + perfect triple play infrastructure video surveillance



Advantage of NEXCOM NIO200 Solution

Scalable Mesh infrastructure

- ❑ Distributed WSN topology
- ❑ Scalable Wi-Fi backbone infrastructure to reserve for future expansion
- ❑ Supports multiple subnets managed by the same Gateway
- ❑ Dual Radio Wi-Fi Mesh with better reliability

Robust & Secure

- ❑ High throughput backbone based on IEEE 802.11an
- ❑ High RF power in Wi-Fi Mesh connectivity
- ❑ High immunity (IEC 61000-4-2,3,4,5 Level-4) to against Surge, ESD,...
- ❑ CID2, ATEX hazardous certificate

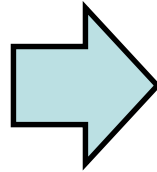
High C/P value solution

- ❑ High scalability lowers CAPEX and ensures swift ROI
- ❑ Reduced TCO (Total Cost of Ownership)
 - Wired backbone (including Fiber deployment) is costly in cabling & limited in scale expansion
 - Flexible Wi-Fi Mesh backbone reduces overall cost



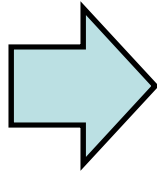
Solution Highlights

Supports distributed network topologies



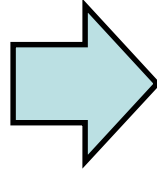
Cost-effective, extended geographic coverage

Supports multiple subnets managed by the same Gateway



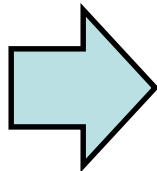
High scalability lowers CAPEX and ensures swift ROI

EZ Mesh Wi-Fi enabled backbone



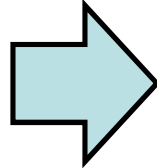
Reliable, robust wireless backbone infrastructure reduces installation and maintenance costs.

CID2, ATEX, EN61000-4-2,3,4,5 Certified



Allows for installation in hazardous areas

Power redundancy (PoE/DC)



Ease of installation

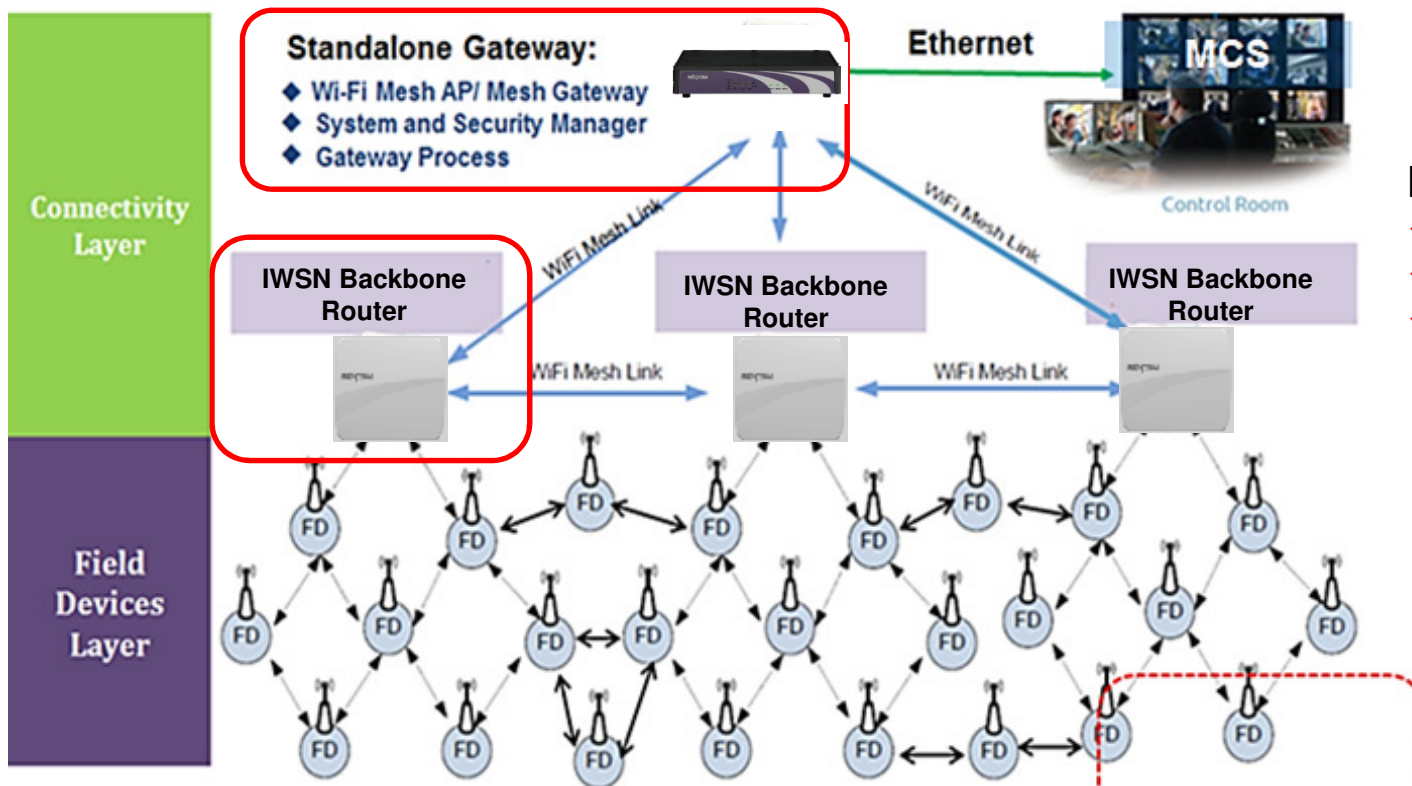


ISA100 Wireless – Native IPv6 Connectivity

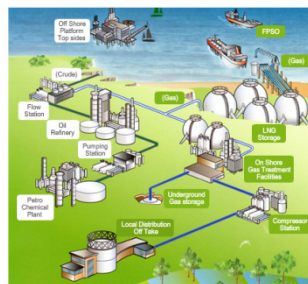
- ◆ **ISA100 Wireless mandates that all entities support native IPv6 addressability and connectivity**
- ◆ **Internet backbones are transitioning to native IPv6 connectivity**
- ◆ **Infrastructure devices are IPv6 ready**
- ◆ **Support for standards based IPv4 encapsulation of IPv6 payloads**



NIO200 Deployment Topology



Process Measurement and Control



Plant controller & management

Industrial Wi-Fi Mesh

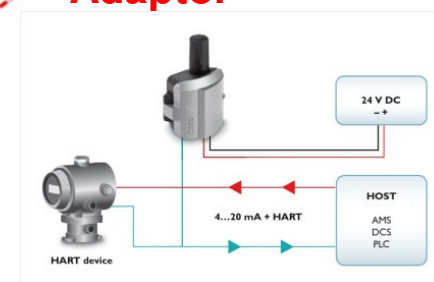
- ✓ IWSN to Wi-Fi Gateway
- ✓ Outdoor IP67
- ✓ C1D2 & ATEX certified



Industrial WSN Mesh
ISA100 Wireless



ISA100 Wireless Adaptor



Traditional Process Monitoring Field Instruments

- Data model primarily based on periodically published low volume data with high frequency reporting rates
- Low latency guaranteed data traffic flows
- Alerting data models supported
- ISA100 Wireless compliant – WCI certified instruments



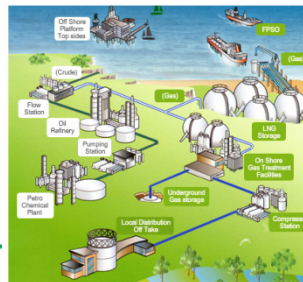
Pressure



Temperature



Flow



More Novel Monitoring Field Instruments

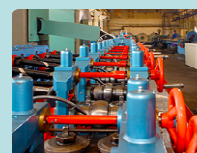
- Higher data volumes – published periodically with lower frequency rates
- Alerting data models supported
- Gracefully co-exist with traditional monitoring instruments
- ISA100 Wireless compliant – WCI certified instruments



Steam trap monitoring



Corrosion



Condition Monitoring

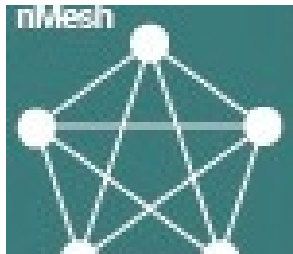


Safety



EZ Mesh

Trusted Wi-Fi Backbone



- ◆ Multi-Path Bridge
- ◆ Self-forming
- ◆ Self-healing
- ◆ Flexible Installation
- ◆ Con-Current Dual Link



Main Feature of EZ Mesh Wi-Fi

Lossless Mesh bridge

- ❑ Best path connection
- ❑ Lossless bridge for ISA100 Wireless, Modbus protocol, management data and video streaming.

Flexible installation

- ❑ Self-forming & self-healing for optimized Wi-Fi backbone infrastructure
- ❑ 4+ hop @ 30Mbps Mesh network

Rugged design

- ❑ Extended operating temperature: -40 ~ +65° C
- ❑ Anti-explosive: CID2, ATEX
- ❑ Power redundancy (PoE/DC input)
- ❑ High RF power, long distance

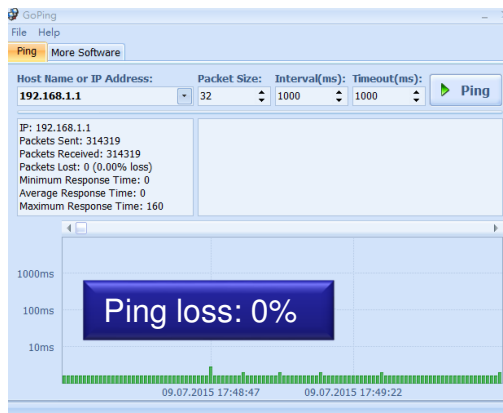
Management

- ❑ Web management & SNMP
- ❑ Central Managed by nCare

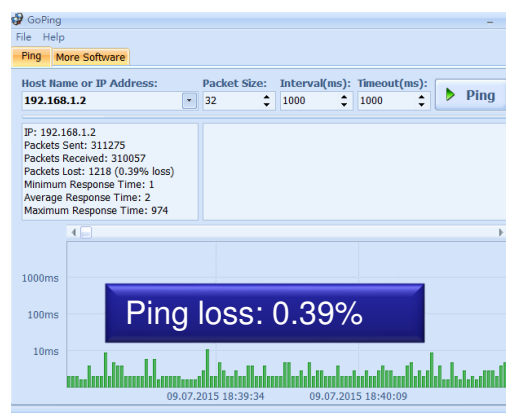


Stability - Ping: Over 96hrs

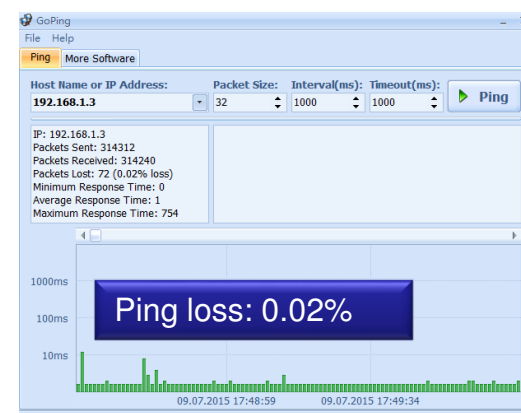
Mesh AP-1



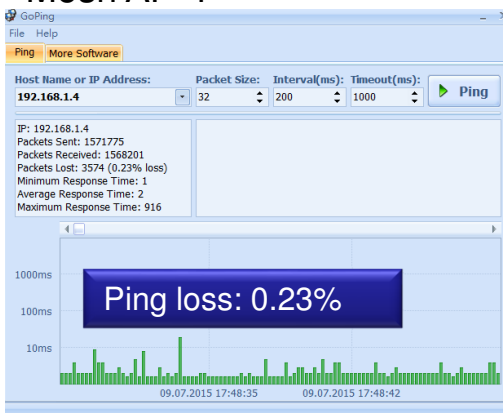
Mesh AP-2



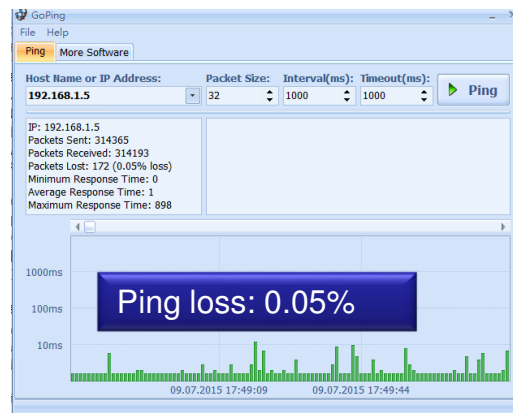
Mesh AP-3



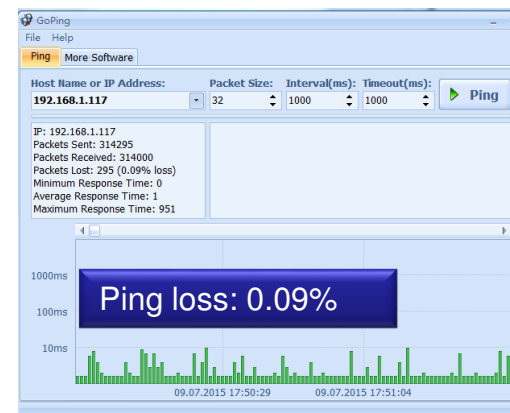
Mesh AP-4



Mesh AP-5



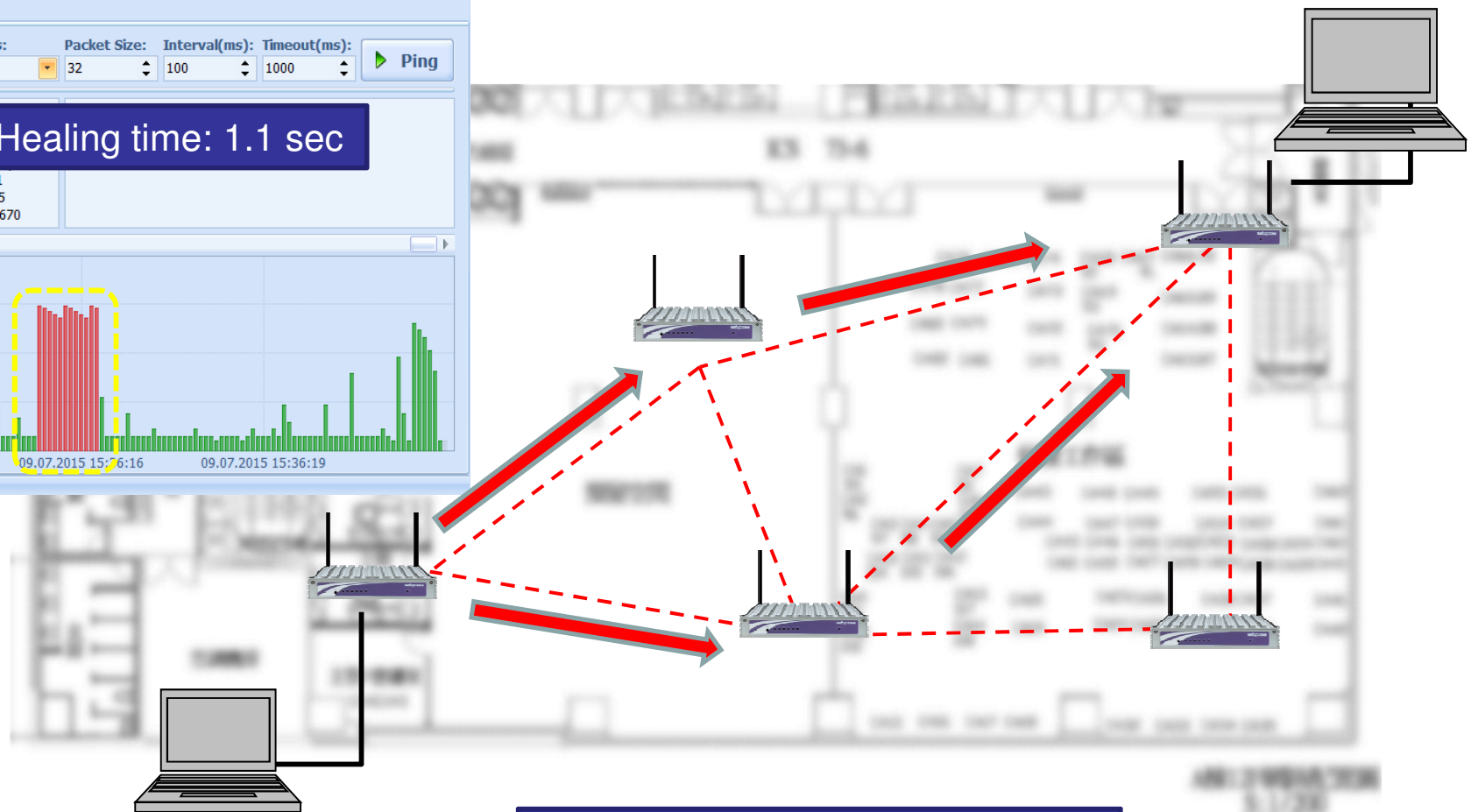
Server PC



Stability over 4-Day endurance verification



Self-healing Performance



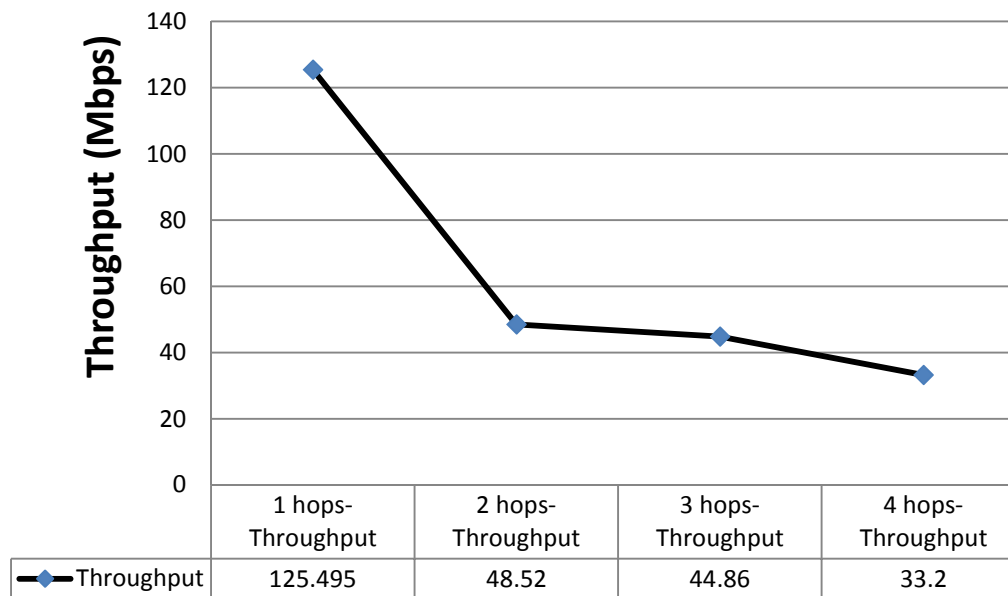
Best path Mesh connection



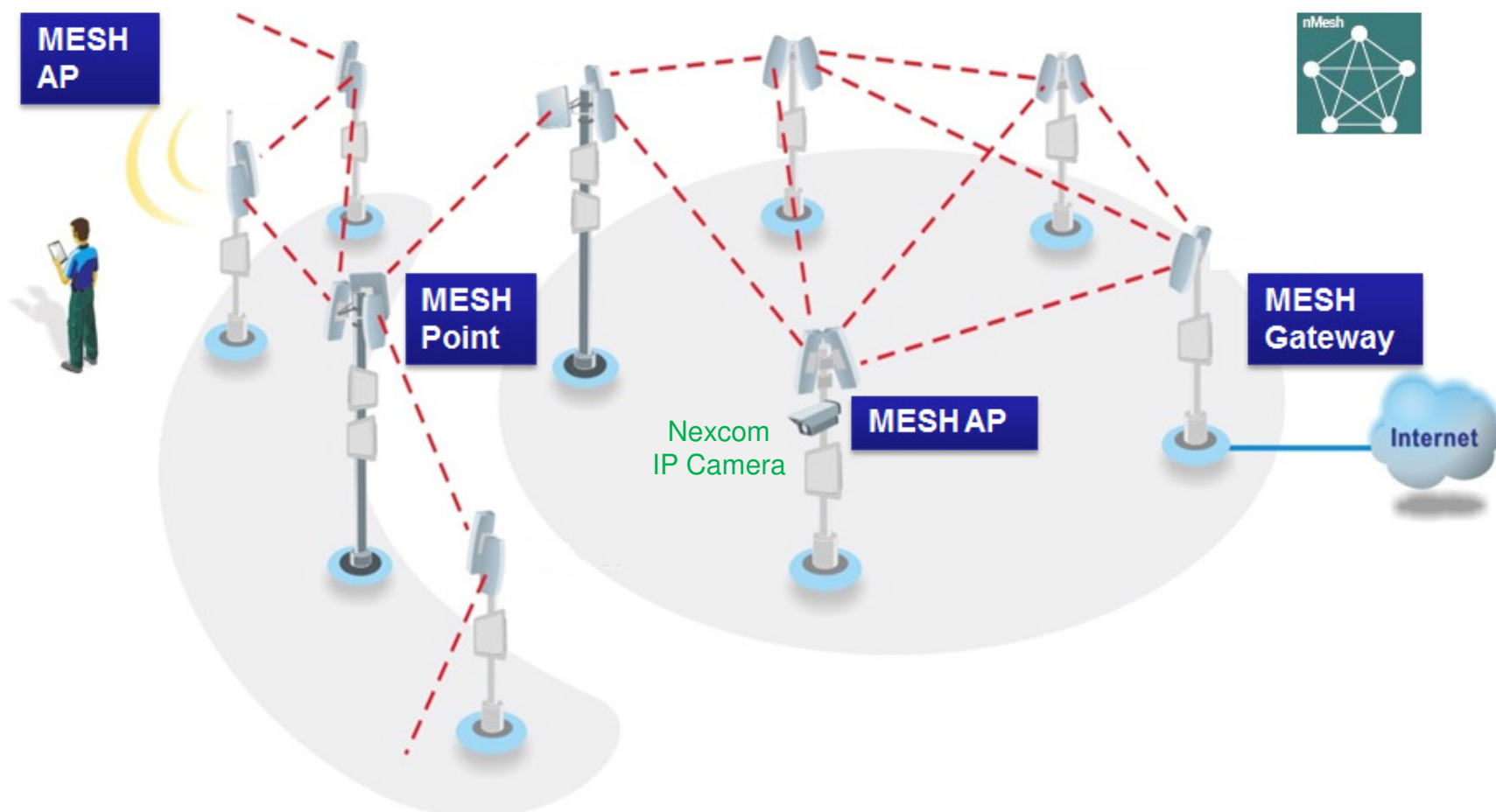
Mesh coverage and performance

Hops	Throughput
1 hops-Throughput	125.495Mbps
2 hops-Throughput	48.52Mbps
3 hops-Throughput	44.86Mbps
4 hops-Throughput	33.2Mbps

EZ Mesh Hopping Performance



Mobile Mesh for larger scale IP camera surveillance

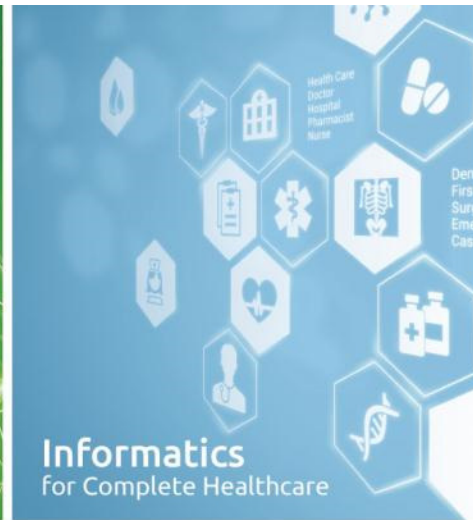
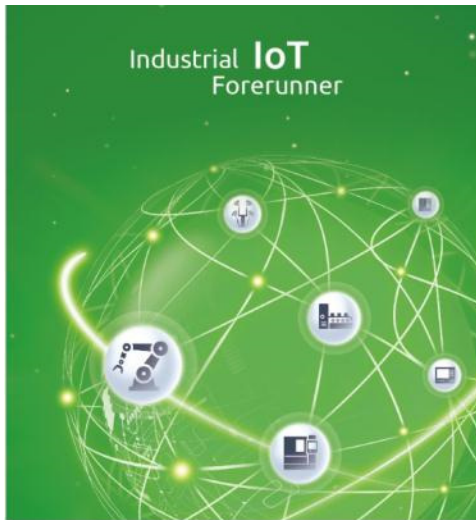


Robust, Secure & Cost-effective Remote Field Surveillance Solution





The Intelligent Systems



Thank You!