



Apprion Presents:

**An Open, Intelligent
Application Platform Approach
to Your IIoT Strategy**



Presenters Today

- Chris Witte, Senior Vice President Freeport Site, BASF Corporation
- Sarah Prinster, Vice President of Marketing, Aprion, Inc.
- James Skoruppa, Site Automation Strategy Leader, BASF Corporation

Andre Ristaino, ISA100 WCI Managing Director

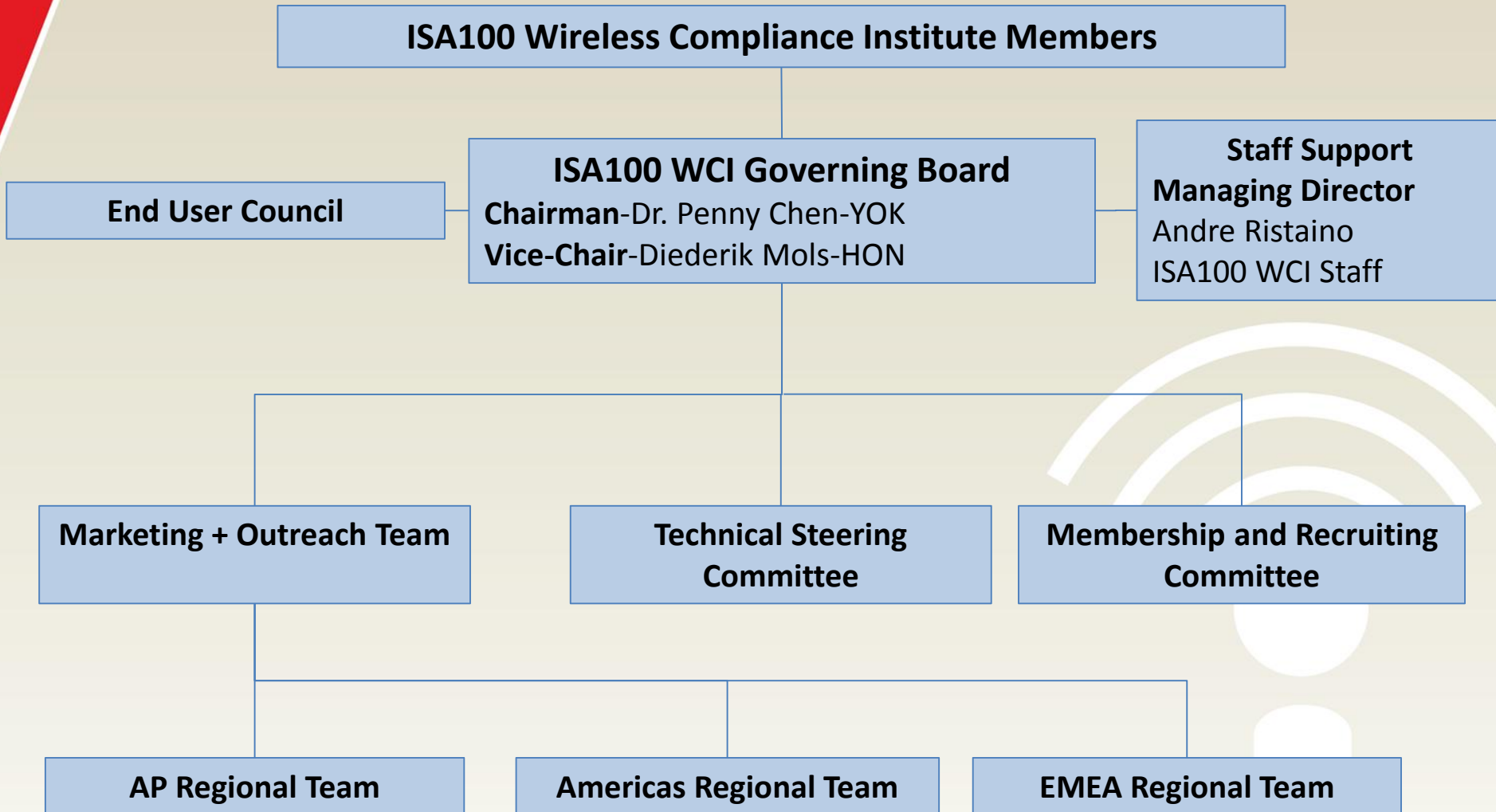
www.isa100wci.org

ISA100 Wireless Compliance Institute Mission

- Manage the ISA100 Wireless certification program to assure interoperability
- Promote the ISA100 Wireless Standard
 - Technology Demo in FCL at Achema June 2015
 - Three live networks with 36 devices from 17 vendors
 - Showcased expanding technical and infrastructure ecosystem
 - Visit the www.isa100wci.org website for more show details

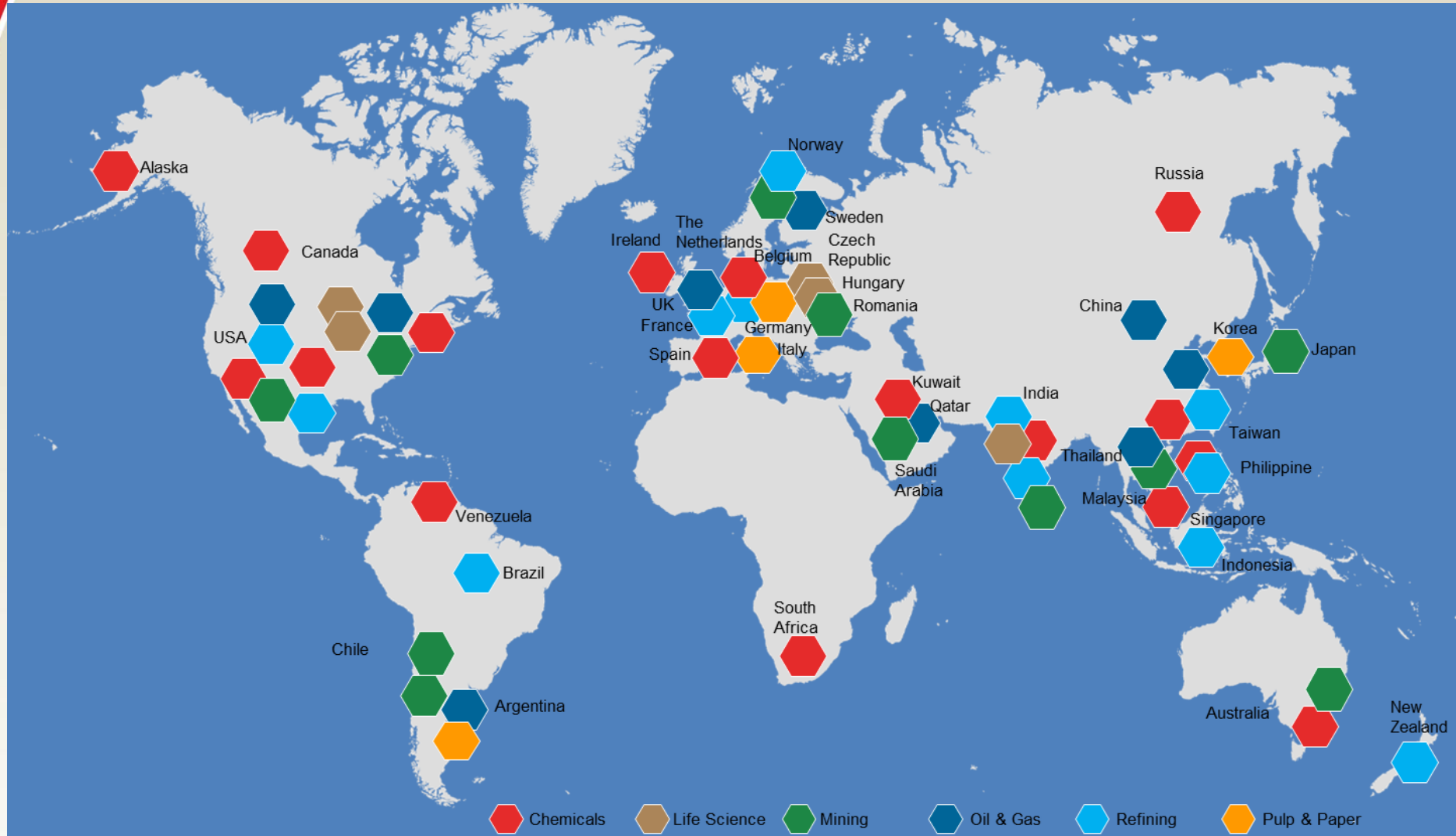
Visit the ISA100 WCI website www.isa100wci.org

Organization Structure



ISA100 Wireless Global Installation Map

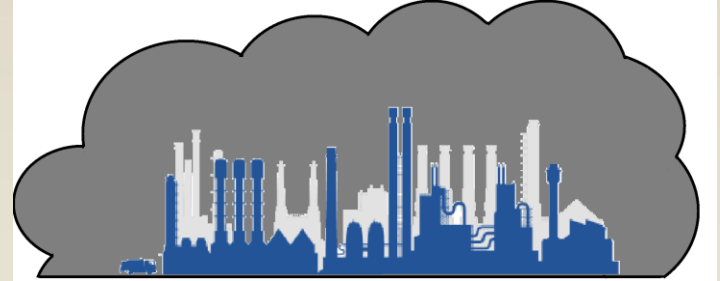
Over One Billion Operation Hours



Agenda

- 45-minute presentation
 - What is IIoT
 - Apprion and the IIoT
 - ISA100 and the IIoT
 - Customer Success Stories with IIoT
 - BASF Freeport IIoT Approach
 - Mobility
 - Video
 - Mustering
- Followed by a 15-minute Q&A session

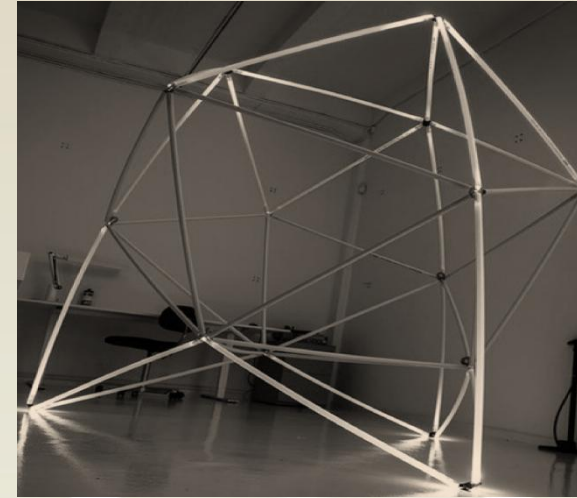
What is the Industrial Internet of Things?



- Internet of things, devices, machines, computers and people
- Using advanced data analytics for transformational business outcomes
- Convergence of:
 - The global industrial ecosystem
 - Advanced computing and manufacturing
 - Pervasive sensing
 - Universal network connectivity

Key Aspects of IIoT

- Utilize predictive analytics with IIoT technologies to improve operational processes
- Integrate various applications, systems and devices seamlessly to improve plant safety and security
- Create an IIoT with an open network and platform approach to incorporate remote and stranded data into daily decision-making



Apprion: Who Are We?

We Were IIoT when IIoT Wasn't Cool

- Apprion has been an IIoT company from the beginning – over a decade
- Designed ION Platform and Solution offering from the start to be open, integrated, industrial and inter-connective
- Focus is on predictive analytics and predictive monitoring of all interconnected devices and applications



Apprion and IIoT: Industrial Wireless Today

MULTIPLE APPLICATIONS



Comms



Video



Location



Mobility



Monitoring

INDUSTRIAL GRADE



Rugged



Safe



Secure



Resilient



Ready

OPEN ARCHITECTURE



Vendor



Wireless



Wireline



Device

MANAGED SERVICES



Site Planning



Deployment



Monitoring



Maintenance

The ION System from Apprion Provides an Open, Integrated, Secure, Resilient Solution

Unique managed services offering with 7x24x365 network monitoring from industrial experts.

Managed Service.



Vendor-Neutral Hardware.

An open, integrated, secure, and truly industrial system for monitoring, managing, and securing any industrial device.



Integrated Solution.

An integrated system for monitoring and managing multiple applications, devices and systems in one dashboard.



Multiple Applications.

ION Applications address key industrial safety, security, compliance and performance issues.



Apprion®



Integrated Solution

The ION System provides customers with a platform for monitoring, managing, and securing multi-vendor devices and applications

Features

- Integrated applications
- Multiple vendors
- Secure
- Open
- Monitoring/Managing

Benefits

- Ease of use
- Ease of installation
- Lower total cost of ownership
- Resilient



Video




Security
Process
WiMAX

Location



Access Control
Mustering
Personnel Tracking
Asset Tracking


Monitoring



Conditions
Emissions
Tank Gauging
Network

Leak
Detection
Pipeline
Safety Shower
Steam Trap

Communications



Emergency Notification
Digital Walkie-talkie
VOIP
Collaboration

Mobility



Turnarounds
Workflow
Mobile
Workforce

Honeywell

Siemens

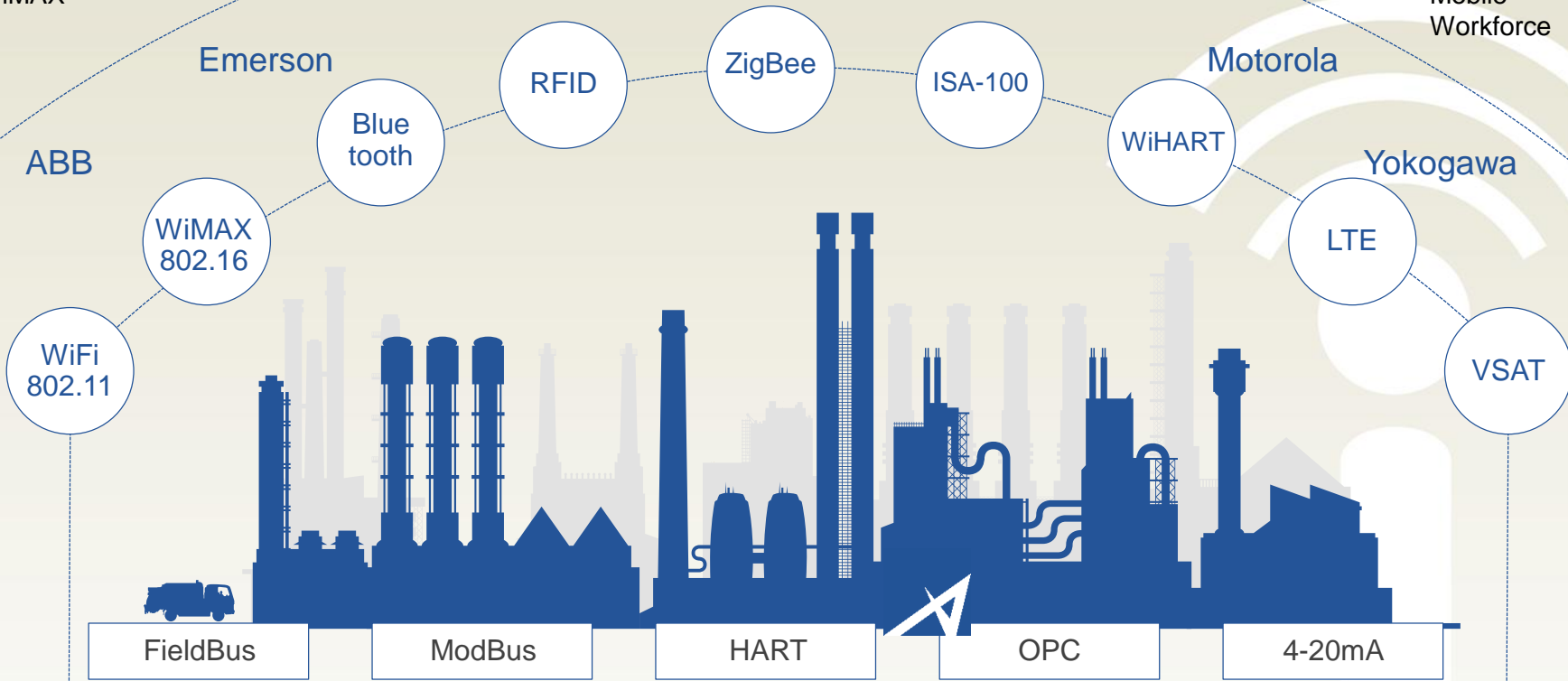
Cisco

Emerson

Motorola

Yokogawa

ABB



ISA100 Wireless Supports IIoT

- IPv6 – Infinite Addressing, more efficient network protocol standard
- Multiprotocol Support
- Strong Security, Two-Layer AES128
- Connecting multi-devices from various vendors in an integrated IIoT system

The ION System and ISA100 for IIoT

- Implemented at leading Chemical Facilities and Refineries
- Improved visibility into the actual performance of production assets
- Pull data and visualize it in meaningful ways
- Integrate multiple devices is key to both ISA100 and Apprion
- Bring together disparate pieces of information from various siloed plant systems

Why IIoT is important to BASF

- Interconnected devices is critical to our Multiple Applications Strategy
- An Open Platform – Adding multiple applications and devices is critical to our strategy
- Big Data – Industrial Wireless Video for Security and Safety
- Predictive Analytics



BASF IIoT Strategy

- Safety Challenges at Freeport site
- Focus on Safety Improvements
- Think out of the box for Personnel Safety – Wireless Automated Mustering
- All under one infrastructure with integrated applications
- Design an Open, Phased Approach
- Partner with Apprion





- Implement the Infrastructure and the Applications will quickly come
- Many Applications in our IIoT Approach: Video, Mobility, Mustering, Reliability, and more!

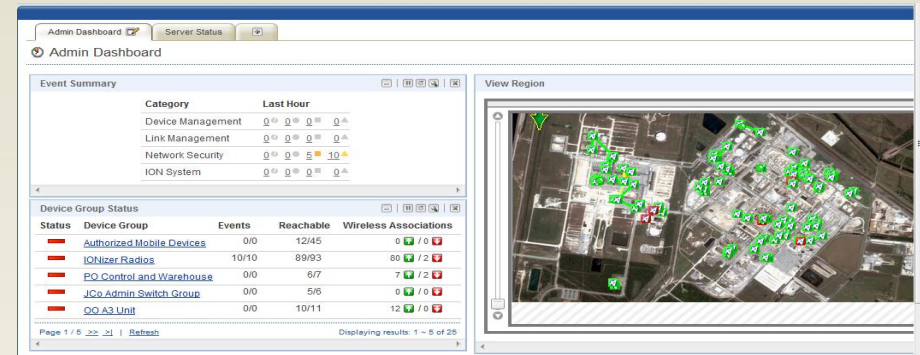


The BASF IIoT Application Approach

- ION Mobility for Turnarounds – mobile handhelds and real-time data transfer
- ION Video – Wireless IP-Cameras for Perimeter Security
- ION Mustering – Automated Personnel Mustering with WiFi Badge Check-in

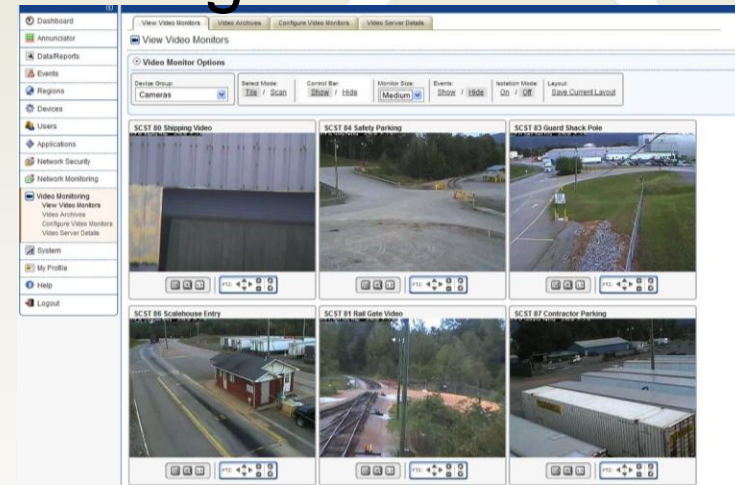
The 1st Application: ION Mobility for Turnarounds - Efficiency & Safety

- Integrated Dashboard
- Motorola handhelds
- Mobility software on handhelds
- Utilize the Open Wireless Infrastructure
- ION Remote Managed Services



The 2nd Application: ION Video Security & Safety

- Industrial World-class cameras IP and Analog
- Big Data: Days and weeks of storage
Months of Archive
- Intelligent Video Analytics
- Object, Motion, Intrusion & Face Detection Ability



Safety – our #1 Priority

Be Safe



- Reduce hazardous incidents by 50% or more through accurate, real-time information
- Monitor worker & asset health, location and condition during high-risk times
- Avoid costs of unplanned downtime resulting from unexpected events
- Leverage the same infrastructure for critical plant monitoring and performance applications

The 3rd Application: ION Mustering

Security & Safety

- Verify personnel location during Emergencies
- Leverages RT Personnel Tracking (WiFi, GPS, RFID)
- Visual Confirmation of Personnel Safety
- Faster, More Accurate and Efficient Mustering
- Greatly Improves Safety & Emergency Response Handling



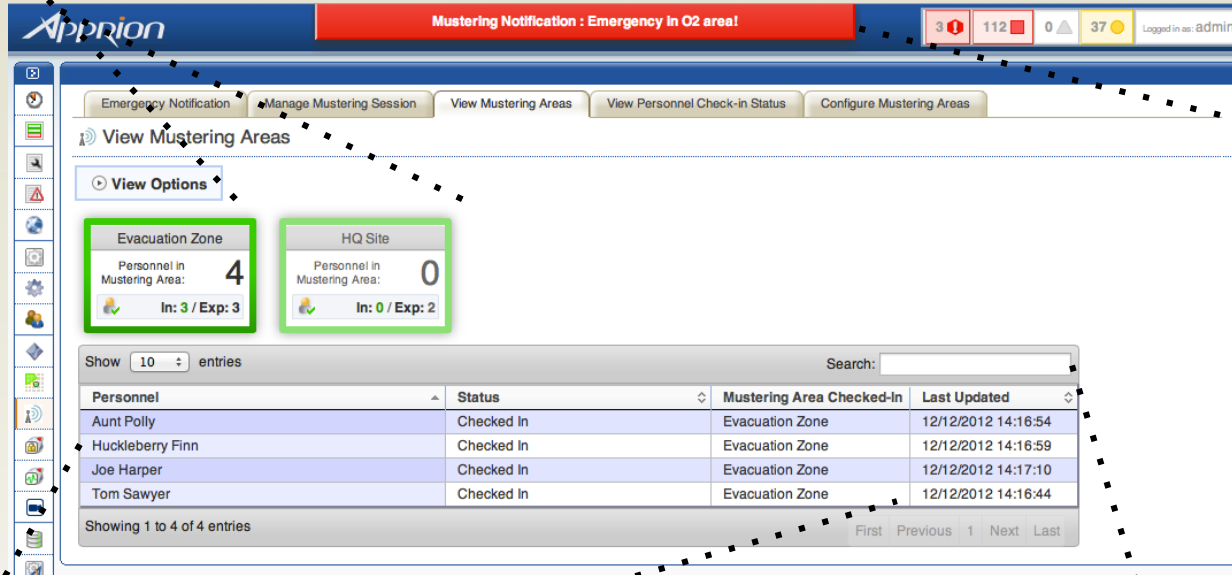
ION Mustering Application

- Immediate need is to locate your people
Are they safe?
- Mustering is highest priority for safety
- Most existing systems are antiquated and require manual action



Mustering Zone

Status by
Mustering
Zone
View specific
asset and
personnel
coordinates
and location
in region



Apprion Mustering Notification : Emergency in O2 area!

Emergency Notification Manage Mustering Session View Mustering Areas View Personnel Check-in Status Configure Mustering Areas

View Mustering Areas

View Options

Evacuation Zone
Personnel in Mustering Area: 4
In: 3 / Exp: 3

HQ Site
Personnel in Mustering Area: 0
In: 0 / Exp: 2

Show 10 entries Search:

Personnel	Status	Mustering Area	Checked-In	Last Updated
Aunt Polly	Checked In	Evacuation Zone		12/12/2012 14:16:54
Huckleberry Finn	Checked In	Evacuation Zone		12/12/2012 14:16:59
Joe Harper	Checked In	Evacuation Zone		12/12/2012 14:17:10
Tom Sawyer	Checked In	Evacuation Zone		12/12/2012 14:16:44

Showing 1 to 4 of 4 entries First Previous 1 Next Last

Advanced
Privacy
Controls
Restrict and
filter location
information by
Emergency
Event, User
Roles and
Privileges

Worker-Level Detail
Easily view recent asset
condition and status reports

Time-Stamped
View all events in
specific location for a
defined time period

Search
View all events in
specific location for a
defined time period

Integrated ION Mustering Platform

The screenshot displays the Apprion Integrated ION Mustering Platform interface. At the top, a red banner reads "EMERGENCY NOTIFICATION: Environment Warning in H2S AREA meet in Mustering Area". The interface includes a sidebar with navigation options like "Ion Projects", "Regions", and "Map View Options". The main area shows a map of a facility with various zones and personnel icons. A "Notification Timer" shows 00h 15m 13s. A "Mustering Area Camera" window displays a live video feed. A "Mustering Area Entry Log" window shows a table with columns for Event, Personnel, and Time. The right sidebar contains "Mustering Mode Controls" and "Events" sections.

Apprion EMERGENCY NOTIFICATION: Environment Warning in H2S AREA meet in Mustering Area

Ion Projects: Facility Maintenance ION Project Ion Communication Region View Logbooks Reports Events

Regions
Map View Options
Map View Actions:
Hide Zone Boundaries
Hide Gauges
Show Assets
Show Personnel
Hide All Icons
Mustering Mode Enabled

Personnel View Options
List Personnel By: Groups Zones
Filter By Name: H2S Area

Personnel 1 / 5
North Wing 0 / 0
South Wing 0 / 0
West Wing 1 / 4
Paula Moshe Facilities Coordinator
Bill Stokes Project Manager
Johnny Tran Electrician

Notification Timer
00h 15m 13s
30min 10min 5min 0min

Mustering Area Camera
CONTROL PTZ

Mustering Area Entry Log

Event	Personnel	Time
Page 1 / 1 Refresh		

Entry: 0 Exit: 0 Total: 0 Reset Counter

Mustering Mode Controls
Zone Details: H2S Area
View Filters:
Procedural Documents
Events
Info: Zone Exit Event #2433
Michael Cheng Exited H2S Area West Wing.
4:05 PM - 09/24/2011
Warning: Motion Detection #2433
Motion Detection from H2S Area NW Perimeter Camera
4:05 PM - 09/24/2011

Search... 15 NEW MESSAGES

Results to Date

- Improved Safety and Security
- Improved Operational Efficiency
- Management and maintenance costs metrics
- Increased uptime from the improvement in overall equipment effectiveness that increases production quality and quantity
- Improved turnaround execution with better communication
- Technology investment less than 1% of Turnaround budget with significant savings

Extending Wireless at BASF

- Additional Mobility Applications
- Access Control for Additional Personnel Safety, Security, & Efficiency
- Advanced Wireless Communications
- Big Data – Reliability & Predictive Analytics
- Operator Mobility
- Construction – CapEx Efficiency Applications

Our Advice to You for an IIoT Strategy

- Carefully Evaluate Your Key Goals
- Research the available Application Options
- Lead with Safety & Security - Human Issues
- Work with an experienced IIoT Vendor – the chosen platform must be Open
- Start Small and Build with an Incremental Approach
- Don't create Siloed Systems

Thank you!

 **Apprion**[®]